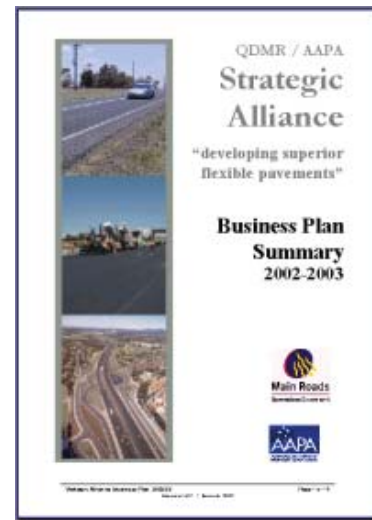


Strategic Alliance means

The alliance between AAPA in Queensland and Main Roads builds on some 20 years of close co-operation between the bituminous products industry and the main provider of declared roads in Queensland.

It is called “strategic” because it does not intrude on the contractual or commercial activities of the partners. The strategic alliance concentrates on the systems & procedures, and the formulation of specifications and practices to “develop superior flexible pavements”.



Progress to date

Since the signing in December 2001, the Alliance Managers have concentrated on developing a firm base on which to build the operations of the new entity. Reporting to a board of directors representing the partners, AAPA & Main Roads, the business plan and communications plan have been developed.

For the 2002 / 2003 year there has been an attempt to integrate the asphalt and bitumen related activities of PMG Division at Herston and the issues identified at the Alliance Reference Group meeting held in November 2001.

The projects will be managed on functional lines as indicated on the back page. This has been trialled on two issues which arose in the first six months of the alliance. Both are covered in detail in this news letter and will be presented in a paper by the Alliance Managers during the RS&E Forum in August 2002.

Involving the Regions

Whilst managed from Brisbane, the alliance serves the needs of the whole of Queensland, wherever flexible pavements perform their role in keeping vehicles moving smoothly. Regional participation is essential to deliver practical and workable solutions.

This participation and involvement will ensure that the projects go from conception into practice. Close involvement of all the stakeholders is what the alliance requires in its principles. Win: win outcomes with open and honest communications will be the cornerstone of its success.



Strategic Alliance Agreement was signed in December 2001

front: Steve Golding, Roy Thomson

back: Ron Gordon, Rob Vos, Dennis Wogan, Ian Reeves, Cameron Nisbett

Pacific Motorway Learnings Project Register of Approved Asphalt Suppliers

Background

Increasingly, large projects are being delivered through a project management structure and utilisation of subcontractor services. RS&E has recognised the need to improve the performance of subcontractors and specialised suppliers involved in Mains Roads projects.

Driven by the review of the Major Works Pre-qualification System after the Pacific Motorway Project, the approval system for asphalt suppliers is being used as a trial for the new process of registration.

Actions taken

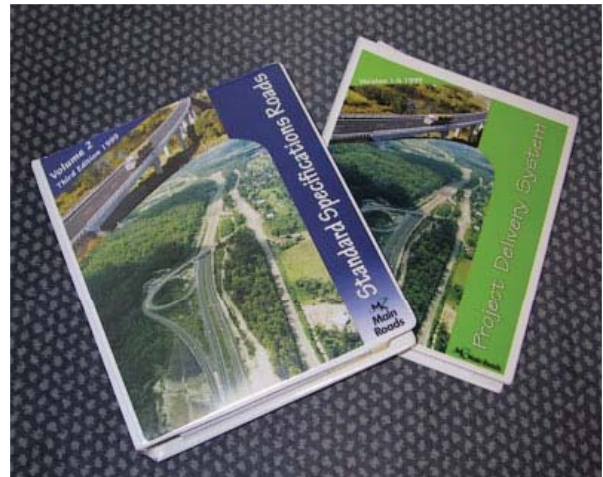
Representatives of AAPA & Main Roads, including the Metro & Border Districts, met to review the present system which may lead to changes in the following:

- System documentation
- Competency requirement (operators, supervisors, managers)
- Application of mix designs in asphalt manufacture
- Field surveillance
- Performance assessment & reporting
- Testing requirements
- Auditing

The draft manual for registering asphalt suppliers will define the requirements on the above and will be prepared through consultation.



The Register of Approved Asphalt Suppliers will impact on the operations of all the producers & pavers in Queensland



Integrating the asphalt mix approval system with the Project Delivery System

Key issues identified

1. Required qualifications, experience and competency requirements
2. Equipment capability and controls
3. Asphalt mix design responsibilities
4. Review of asphalt mix design performance
5. Inspection and testing practices, including analyses of data and trends
6. The role of surveillance and auditing
7. Performance assessment and feedback
8. Mechanisms for appeals, including responsibilities and procedures
9. Confidentiality of asphalt supplier details

Next steps

- Publish the manual before the end of 2002, and trial for 12 months
- Invite all currently registered suppliers to apply
- Ongoing consultation with participants to seek maximum acceptance and improvements. This will cover:
 - ◆ Briefing on the revised system
 - ◆ Start the process of feedback
 - ◆ Define performance assessment process
 - ◆ Define overall assessment process for the new system

Technical Investigation Report Stone Mastic Asphalt – performance

Background

Recent underperformance of asphalt pavements with SMA wearing courses in SE QLD provided an opportunity to apply the alliance principles to finding solutions and considering different ways of working.

This under performance has manifested itself in projects constructed in the last 18 months in the form of surface staining, raveling, and in some cases disintegration of the underlying pavement layers.

SMA's have been used since 1996 with many 1000's tons being placed as the preferred wearing course for high speed, high load roads. The Qld approach has used high strength modified binders and fibres, and has a reasonably open structure requiring an underlying waterproofing seal.

Actions taken

Working in line with the alliance principles, a feedback session was held in March 2002 where full details of the issue were presented and small groups established to look at causes and impacts. These covered:

- Laboratory investigations
- Broader survey of problem areas
- Checking water sensitivity of aggregates
- Consideration of remedial treatments
- Advice to Main Roads regions & districts
- Quality control - manufacture & placing



SMA cores with SAMI seal



Bruce Highway near Gympie showing "pumping" of fines

- Review of design method
- Performance study of SMA pavements

Another feedback session was held in July which has given greater understanding and direction to prevent the problems recurring.

Key issues identified

- Working together from lab to field is giving more freedom to optimise SMA
- Shared and open communications build on the strengths of builder, manufacturer, specifier and designer
- Non-threatening solution-finding gives flexibility in improvements "on the run"
- Involving all stakeholders including aggregate, filler, fibre and binder suppliers helps get to quicker answers

Next steps

- Feedback to be included in design, mix approval and specification requirements
- Performance monitoring introduced as a standard part of mix design approval
- Quality management & performance to be included in appointment of asphalt suppliers
- International study tour, including SMA

Business Plan

The projects are linked to Reference Group - identified issues and tied into Main Roads & AAPA activities. Projects planned will cover:

- Tailoring SMA to Queensland conditions
- Whole of life costing
- Road Performance Studies
- Bitumen sprayer calibration - Strategy for Queensland
- Best practice in the use of modified binders
- Quality Assurance
- Recycled asphalt pavements - RAP
- Pavement design system
- Education and skills development
- Subcontractor approval system
- Innovation system

Communications Plan

Covering from news letters to meetings and displays, the communications plan is being set in motion from the RS&E Forum in August 2002. Regular releases on the progress & outcome of projects will be presented through technical details within the news letters.

Reference Group

Including regional and head office participants, the reference group provides direction to the alliance and reviews the activities and project outcomes.

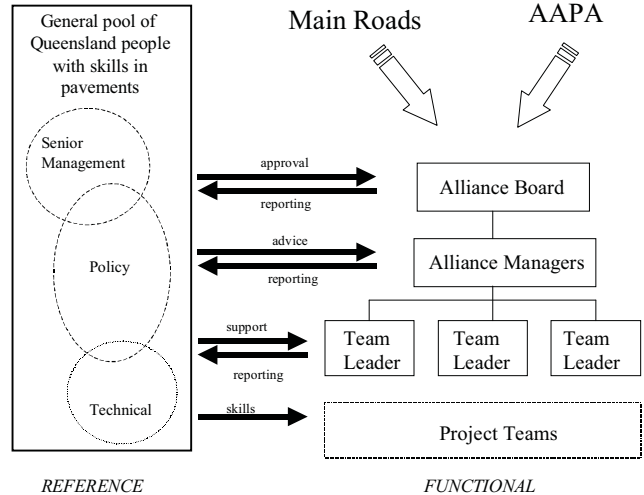


Diagram showing the relationship between the skills pool of resources and the operations of the projects

Reflecting the combined wishes of the alliance partners at the operational level, it has an important role to play in the functioning and success of the projects.

Calendar of events

The Strategic Alliance Project Planner below gives some idea of the key areas of alliance activity through 2002 / 2003. News letters can be expected quarterly, with the Reference Group meetings in August and March.

Queensland Main Roads Department and Australian Asphalt Pavement Association Queensland
STRATEGIC ALLIANCE PROJECT PLANNER 2002 - 2003

Title	Jul 2002	Aug 2002	Sept 2002	Oct 2002	Nov 2002	Dec 2002	Jan 2003	Feb 2003	Mar 2003	Apr 2003	May 2003	Jun 2003
BOARD		*			*			*			*	
NEWSLETTER		*			*			*			*	
EVENTS		Reference Group	SouthEast Symp	Southern Central Symp				Reference Group				
		RSE Forum										
		Northern Symp										
PROJECTS												
Tayloring SMA to Queensland conditions		SMA review and trials					Revised SMA specification					
Whole of life costing												
Road Performance Studies												
Bitumen sprayer calibration - Strategy for Queensland												
Best practice use of modified binders												
Quality assurance												
Recycled asphalt pavement												
Pavement design system												
Education and skills												
Subcontractor approval system												
Innovation system												